



KCA Laboratories
232 North Plaza Drive
Nicholasville, KY 40356

(833) 522-5227
https://kcalabs.com
KDA Lic.# P_0058

PET TREAT 300MG Broad Spectrum

Sample ID: 81923KCA4677821

Cultivar: N/A

Matrix: Ingestible

Type: Biscuit

Sample Size:

Batch#: LE190081

Client

Dwell CBD

Lic.#

173 E. Brannon Road

Nicholasville, KY 40356

Summary

Test

Cannabinoids

Date Tested

8-19-2023

Result

Complete

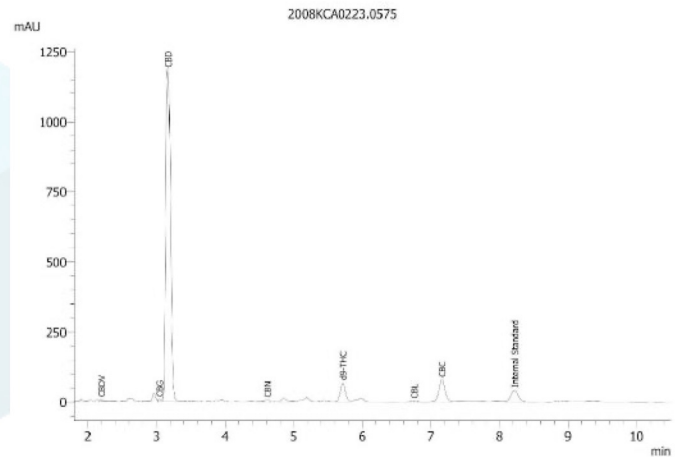
CBD

Cannabinoids by HPLC-PDA

Complete

0.37000 mg/mL Total THC	8.94300 mg/mL Total CBD	9.87500 mg/mL Total Cannabinoids	NT <i>Not Tested</i> Moisture Content	Not Tested Foreign Matter
-----------------------------------	-----------------------------------	--	--	-------------------------------------

Analyte	LOD	LOQ	Result	Result
	mg/mL	mg/mL	mg/mL	%
CBC	0.00095	0.00284	0.46000	0.048423
CBCA	0.00181	0.00543	ND	ND
CBCV	0.00060	0.00180	ND	ND
CBD	0.00081	0.00242	8.94300	0.941398
CBDA	0.00043	0.00130	ND	ND
CBDV	0.00061	0.00182	0.02700	0.002842
CBDVA	0.00021	0.00063	ND	ND
CBG	0.00057	0.00172	0.03300	0.003474
CBGA	0.00049	0.00147	ND	ND
CBL	0.00112	0.00335	0.01800	0.001895
CBLA	0.00124	0.00371	ND	ND
CBN	0.00056	0.00169	0.02400	0.002526
CBNA	0.00060	0.00181	ND	ND
Δ8-THC	0.00104	0.00312	ND	ND
Δ9-THC	0.00076	0.00227	0.37000	0.038949
THCA	0.00084	0.00251	ND	ND
THCV	0.00069	0.00206	ND	ND
THCVA	0.00062	0.00186	ND	ND
Total THC			0.37000	0.038949
Total CBD			8.94300	0.941398
Total			9.87500	1.039507



Total THC = THCA * 0.877 + Δ9-THC

Total CBD = CBDA * 0.877 + CBD

LOD = Limit of Detection

LOQ = Limit of Quantitation

ND = None Detected

For plant material, the reported result is based on a sample weight with the applicable moisture content for that sample.

Wes Rogers

Wes Rogers
Principal Scientist

This product or substance has been tested by KCA Laboratories using validated testing methodologies and a quality system. Values reported relate only to the product or substance tested. KCA Laboratories makes no claims as to the efficacy, safety or other risks associated with any detected or non-detected amounts of any substances reported herein. This Certificate of Analysis shall not be reproduced except in full, without the written approval of KCA Laboratories.